

# JSEG-04K

## AI based Brain Segmentation Solution

### | Summary

Segmentation of brain regions provides a detailed analysis of symptoms by utilizing location information and volume information of each disease. The automated segmentation function can be used to quantify changes in volume that can be tracked. This function can be helpful in working with a variety of indicators.

JSEG-04K measures information such as volume by automatically classifying white matter, gray matter, and cerebrospinal fluid in brain regions. Each classified area is used as an indicator of phenomena such as brain aging and hydrocephalus.

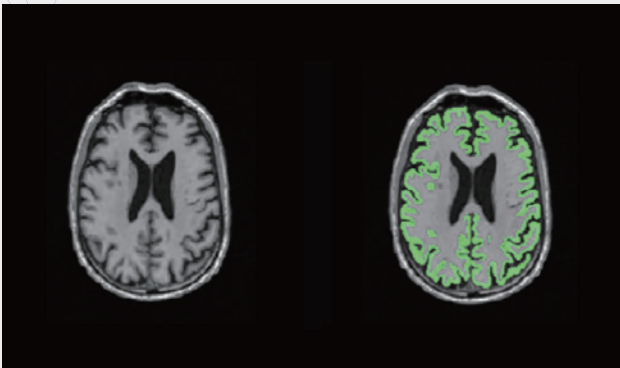
### | Key Components & Performance

- Analysis Time : within 30 seconds
- Display analysis result within the web-based user interface

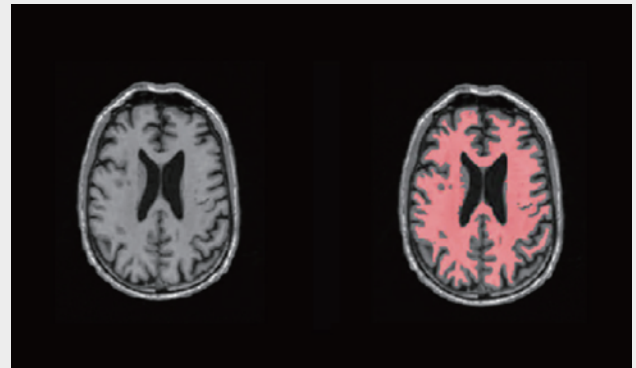
### | Input / Output

- Input Data                      Subject Brain MRI DICOM (3D T1 MPRAGE)
- Output Information            Gray matter area, White matter area, CSF area

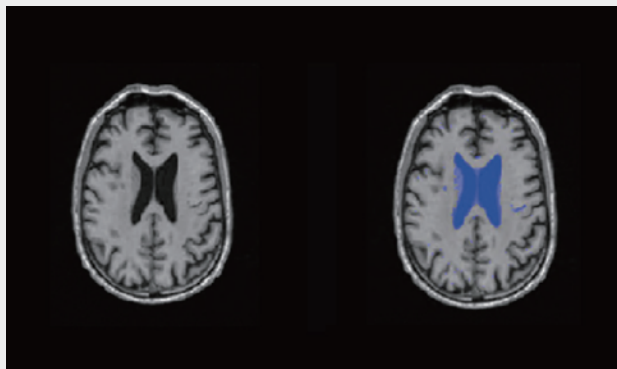
## Solution UI



1 Gray matter area



2 White matter area



3 Cerebrospinal fluid area

## Unique Functionality

- Automated region segmentation using T1 images
- Provides each segmented gray matter area, white matter area, and cerebrospinal fluid area