



JREG-01K

AI based Image Registration Solution

| Summary

The process of registering the lesion area to a standard template, it shows a lot of manpower & deviation due to proficiency. Therefore, an automated registration function and the ability to modify can be helpful in generating stable lesion area data in standard templates.

JREG-01K is a solution that generates data for analysis by automatically matching and correcting the lesion area in the Brain MRI to the MNI template. In the case of the brain, various forms appear depending on the flexibility of neural development. Therefore, the registration function of JREG-01K can be helpful for statistical analysis of the brain lesion area.

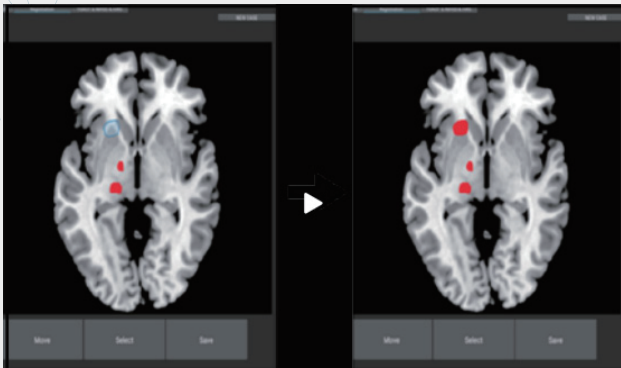
| Key Components & Performance

- Single Data Center Dice coefficient 75.20%
- Analysis Time : within 10 seconds
- Convenient patient data management through PACS interworking
- Display analysis result within the web-based user interface

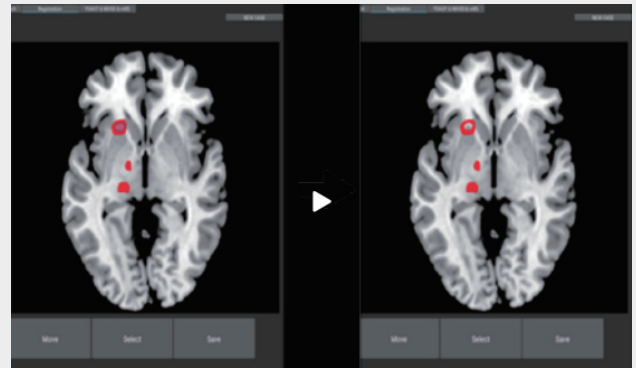
| Input / Output

- **Input Data** MRI DICOM (DWI), Lesion image, Matched MNI Template
- **Output Information** Registration and corrected image

Solution UI



1 Add lesion area



2 Delete lesion area



3 Reverse lesion area



4 Moving lesion area

Unique Functionality

- Automated lesion registration
- Matching function by hemisphere
- Data generation function for statistical analysis
- Auto-correction of selected area