

AI for Human Benefit, Everywhere

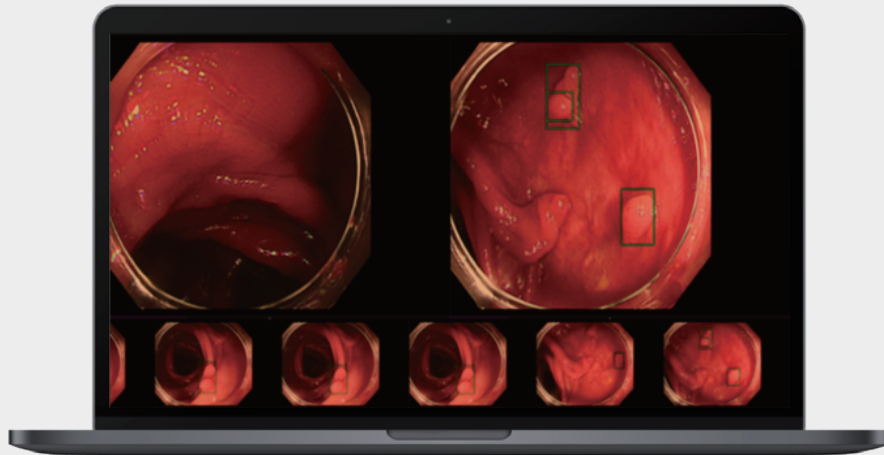
JFD-01K

AI based Endoscopy Analysis Solution



MEDIHUB ENDOSCOPY





JFD-01K

AI based Colon Polyp Detection Solution

| Summary

Colorectal cancer can be easily prevented through early detection and resection of polyps. However, a specialist must check the colonoscopy image from beginning to end. Also, the proficiency of the specialist has a great influence because it is not a standardized image. Therefore, assistance of AI is needed to perform consistent checkups without being affected by the specialist's proficiency or fatigue.

JFD-01K is an AI-based medical solution that detects diseases and abnormalities in colonoscopy images obtained from endoscopic devices. This solution can detect diseases in real time from colonoscopy images and assists diagnosis by indicating the location and probability of the detected area.

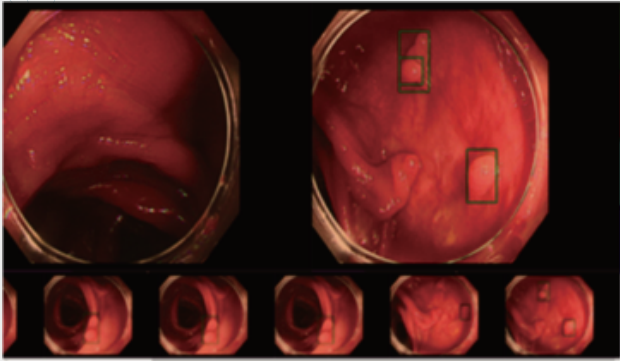
| Key Components & Performance

- Single data center AP(Average Precision) 96.70%
- Analysis Time : within 0.03s
- Convenient video input/output through PACS
- Display analysis result within user interface

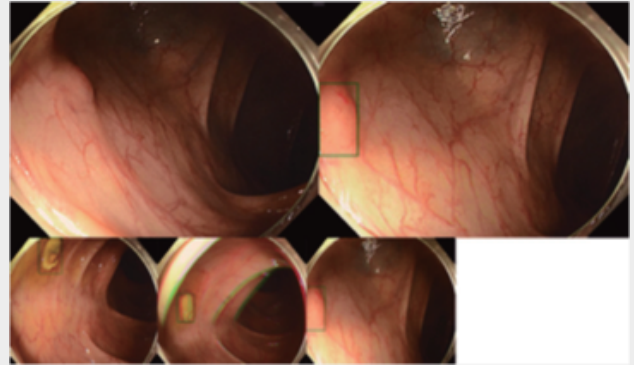
| Input / Output

- Input Data Patient colonoscopy video stream
- Output Information Location of polyp and its probability

Solution UI



1 Visualization of polyp in colonoscopy (1)



2 Visualization of polyp in colonoscopy (1)

Unique Functionality

- Real-time detection of polyp in colonoscopy with AI
- Install with ease via capture board
- Provide result auto-save function for future analysis



AI R&D Center

JLK Tower, 5 Teheran-ro
33-gil, Gangnam-gu, Seoul,
Republic of Korea

☎ +82-70-4651-4051

JLK, Inc.

#204, 10, Yangcheongsongdae-gil,
Ochang-eup, Cheongwon-gu,
Cheongju-si, Chungcheongbuk-do,
Republic of Korea

JLK US, Inc.

3003 N 1st ST #322, San
Jose, CA 95134, USA

✉ jlk_usa@jlkgroup.com

JLK Japan Co., Ltd.

#208, 6 Chome 10-6 Otsuka
Bunkyo-ju, Tokyo, Japan

✉ jlk_japan@jlkgroup.com