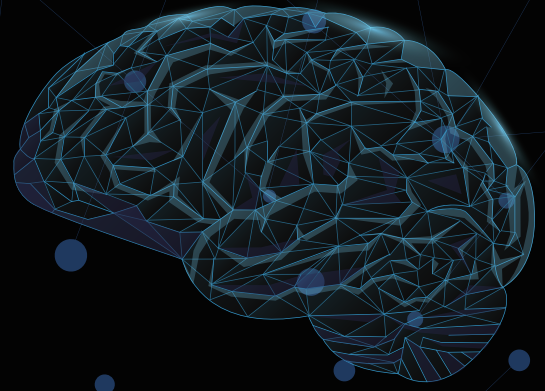


AI for Human Benefit, Everywhere

JAD-01K

AI based Alzheimer's Disease Analysis Solution



MEDIHUB DEMENTIA





JAD-01K

AI based Alzheimer's Disease Analysis Solution

| Summary

Early diagnosis and proper treatments of MCI patients are very important in terms of preventing and delaying the progress of Alzheimer's disease before the patients have developed AD.

JAD-01K is an AI system that diagnoses the status of Alzheimer's disease (AD) using the patient's MRI images and clinical information data.

| Key Components & Performance

- Registration of brain MR images to matching standard templates
- Register and visualize clinical information
- PACS-linked patient data management
- Analysis result report

| Input / Output

- **Input Data** Patient's MRI DICOM (FLAIR, T1, T2), Clinical information
- **Output Information** Probabilities of Alzheimer's Disease (AD, MCI converter, MCI nonconverter)



AI R&D Center

JLK Tower, 5 Teheran-ro
33-gil, Gangnam-gu, Seoul,
Republic of Korea

☎ +82-70-4651-4051

JLK, Inc.

#204, 10, Yangcheongsongdae-gil,
Ochang-eup, Cheongwon-gu,
Cheongju-si, Chungcheongbuk-do,
Republic of Korea

JLK US, Inc.

3003 N 1st ST #322, San
Jose, CA 95134, USA

✉ jlk_usa@jlkgroup.com

JLK Japan Co., Ltd.

#208, 6 Chome 10-6 Otsuka
Bunkyo-ju, Tokyo, Japan

✉ jlk_japan@jlkgroup.com